

Suzuki Alto

1.0L GL DA2 9khz MT FMC
2025 • Petrol • Manual

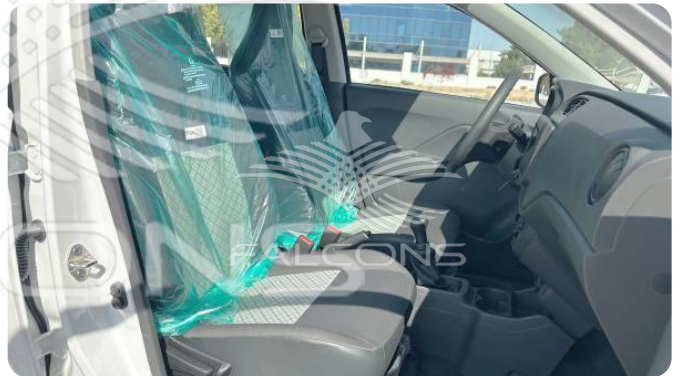


FALCONS

MODEL YEAR 2025	FUEL TYPE Petrol	TRANSMISSION Manual
CYLINDERS 3	TYPE Hatchback	CODE AW268

Gallery







Technical Features

- Dimensions (LxWxH) mm : 3530 x 1490 x 1520
- Displacement (cc) : 998
- Wheelbase mm : 2380
- Max. Power HP/rpm : 65/5500
- Max. torque Nm : 89/3500
- Gross vehicle weight (kg) : 1150
- Fuel tank capacity (L) : 27
- No. of seats : 5
- Gearbox : 5MT
- Tyre dimension : 145/80R13

Interior Features

- Manual Air conditioning
- Display : Segment display
- Audio : 7inch Display audio + BT
- Speakers : 4
- 12V accessory socket
- Electric windows : Front
- Central door locking
- Power steering
- Steering audio control
- 3-spoke Steering wheel : Urethane
- Upholstery : PVC+Fabric
- Side mirrors adjustable : Internally adjustable
- Airbags : D+P

Exterior Features

- Engine : K10C
- Fuel system : Multipoint injection
- Front brake : Ventilated disc
- Rear brake : Drum
- Front suspension : MacPherson Strut
- Rear suspension : Torsion beam
- Rear parking sensor
- Door handles : Body coloured
- Door mirror : Body coloured
- Front grill : Black
- Wheels : 145/80R13 + steel wheels with full wheel cover
- ABS+EBD
- ESP
- High-mount stop lamp
- Immobilizer
- Headlamps : Halogen multireflector

